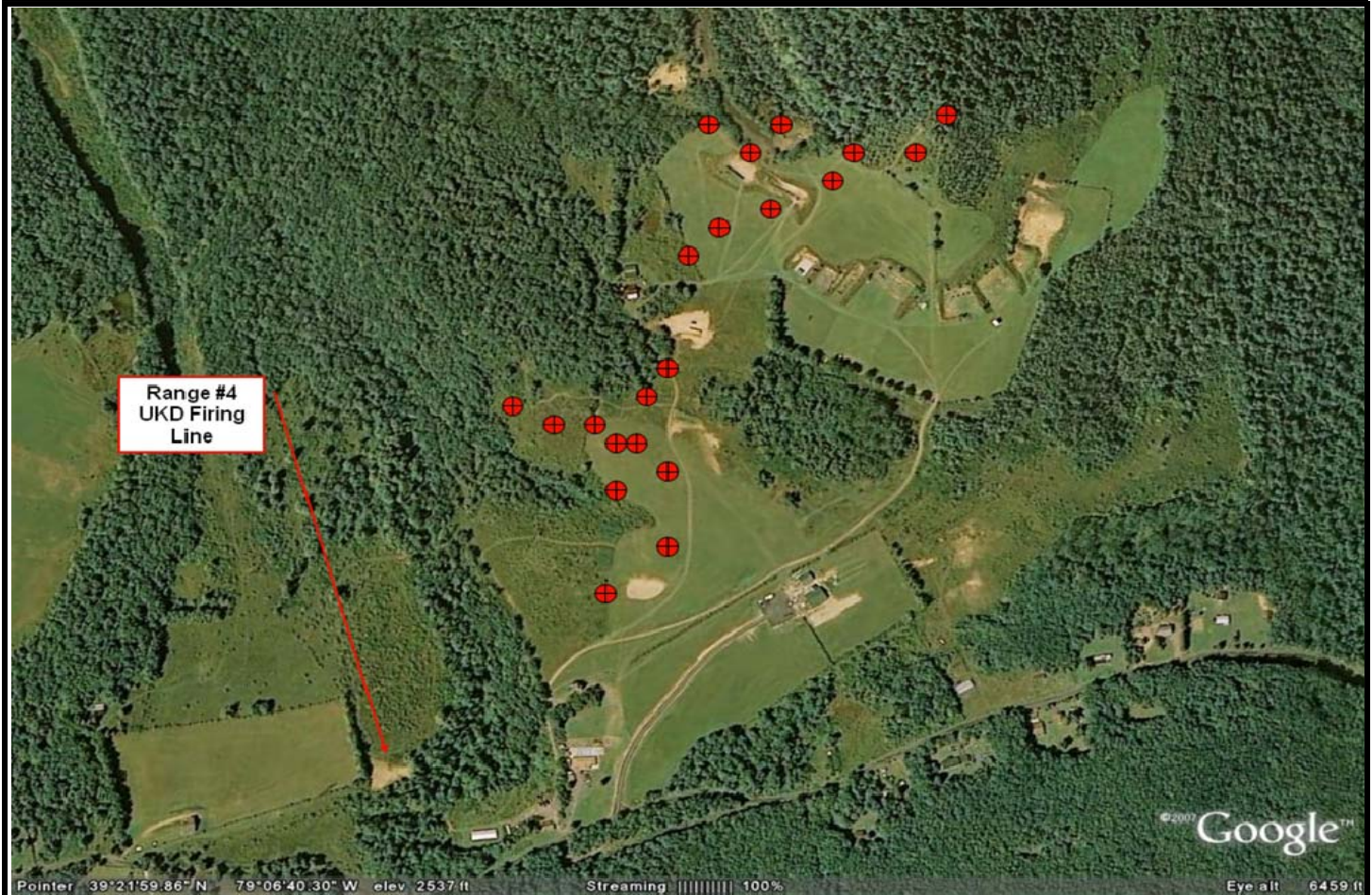


Range 4

STORM MOUNTAIN, INC.
Training Division



Range 4 is an Unknown Distance rifle range which has valleys, hill tops and hill top to hill top shooting opportunities. Most natural terrain has been left in place to maximize the wind conditions. The wind flags which are located on the 200, 400 and 600 yard lines are not visible from this shooting platform. The angle to the targets on this range change the normal wind flow from $\frac{1}{2}$ value to full value for all ranges.

The targets are 24"x24" steel human silhouettes from 200 yards to 400 yards and 24"x48" human silhouettes from 400 yards out to 1000 yards. All targets are placed at varying distances to test the shooters capabilities of range estimation.

- Unknown Distance Rifle
- 10 firing points
- 21 reactionary steel targets from 300 – 1000 yards.
- .30 cal and smaller.
- Magnums allowed.
- No armor piercing projectiles.

Hourly Rates (2 Hr Minimum): \$85. Per hour (non-member), \$75. Per hour (member).

Available Dates: Available 7 days per week with prior reservation.

How To Book: email: info@stormmountain.com or call: 304-446-5526.

