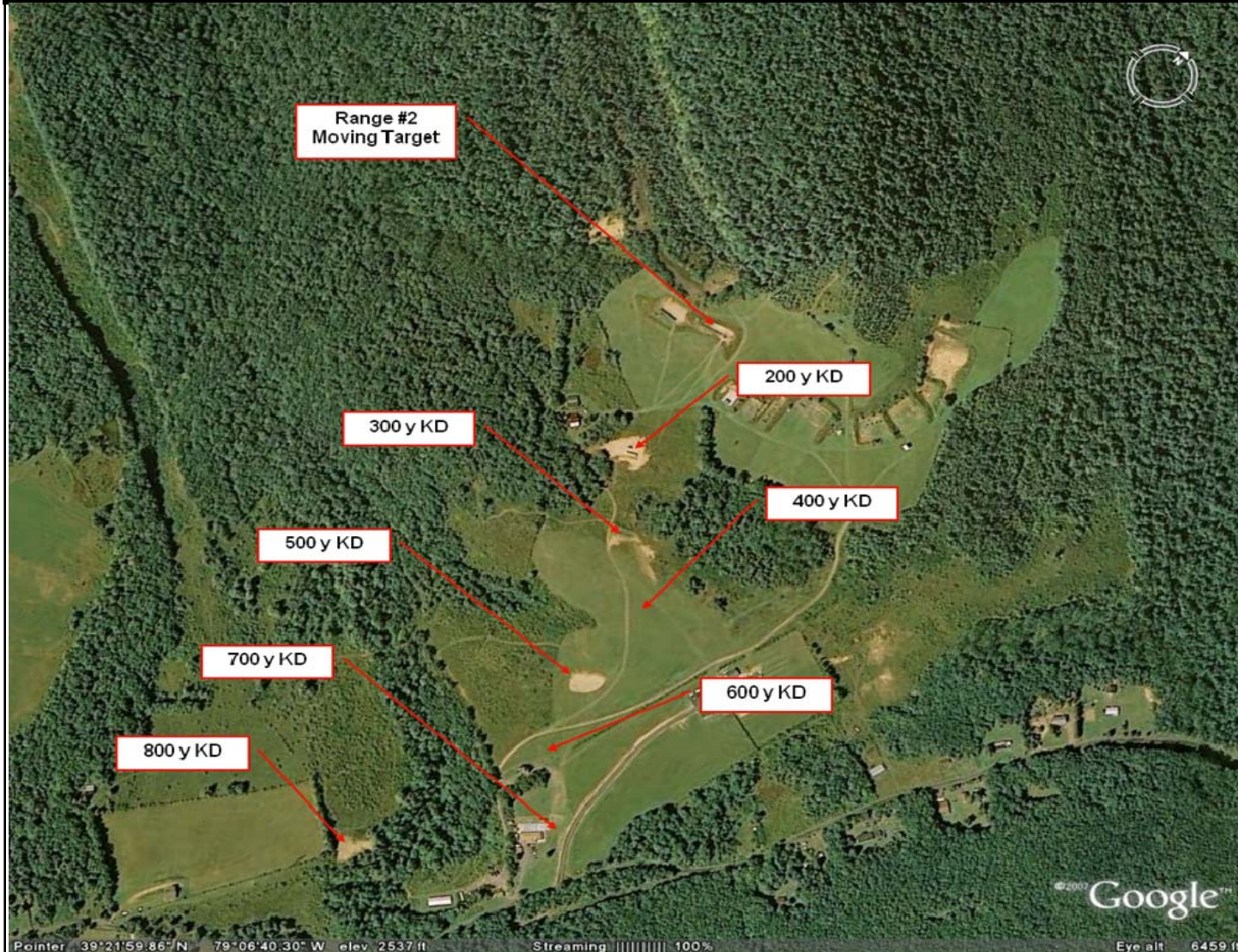


## Range 2

STORM MOUNTAIN, INC.  
Training Division



Range 2 is a Known Distance Moving Target rifle range similar to most military flat rifle ranges. Most natural terrain has been left in place to maximize the wind conditions. Wind flags are located on the 200, 400 and 600 yard lines.

The mover is a 12" wide x 48" tall steel target system that travels at 3 fps or 2.2 mph along a 100' path in both directions. This system requires a range master and target controller.

- Moving target (Precision Rifle/Sniper/Carbine)
- 20 firing points
- Firing berms at 200, 300, 400, 500, 600, 700 and 800
- Porta-Target 100' Steel System
- .30 cal and smaller.
- NO-Magnums allowed.

**Hourly Rates (2 Hr Minimum):** \$85. Per hour (non-member), \$75. Per hour (member).

**Staffing Rates:** \$60. Per hour.

**Available Dates:** Available 7 days per week with prior reservation.

**How To Book:** email: [info@stormmountain.com](mailto:info@stormmountain.com) or call: 304-446-5526.

